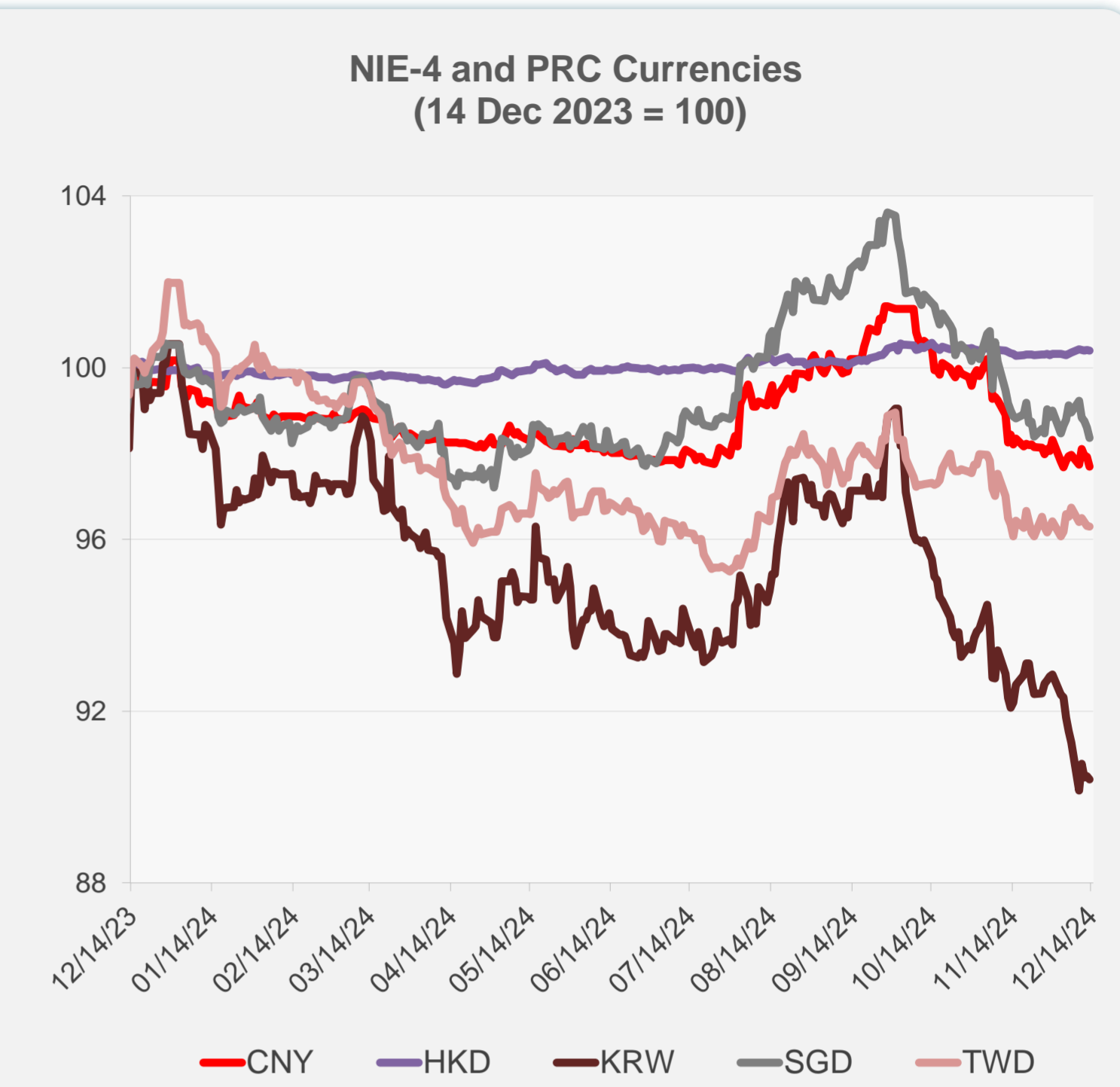
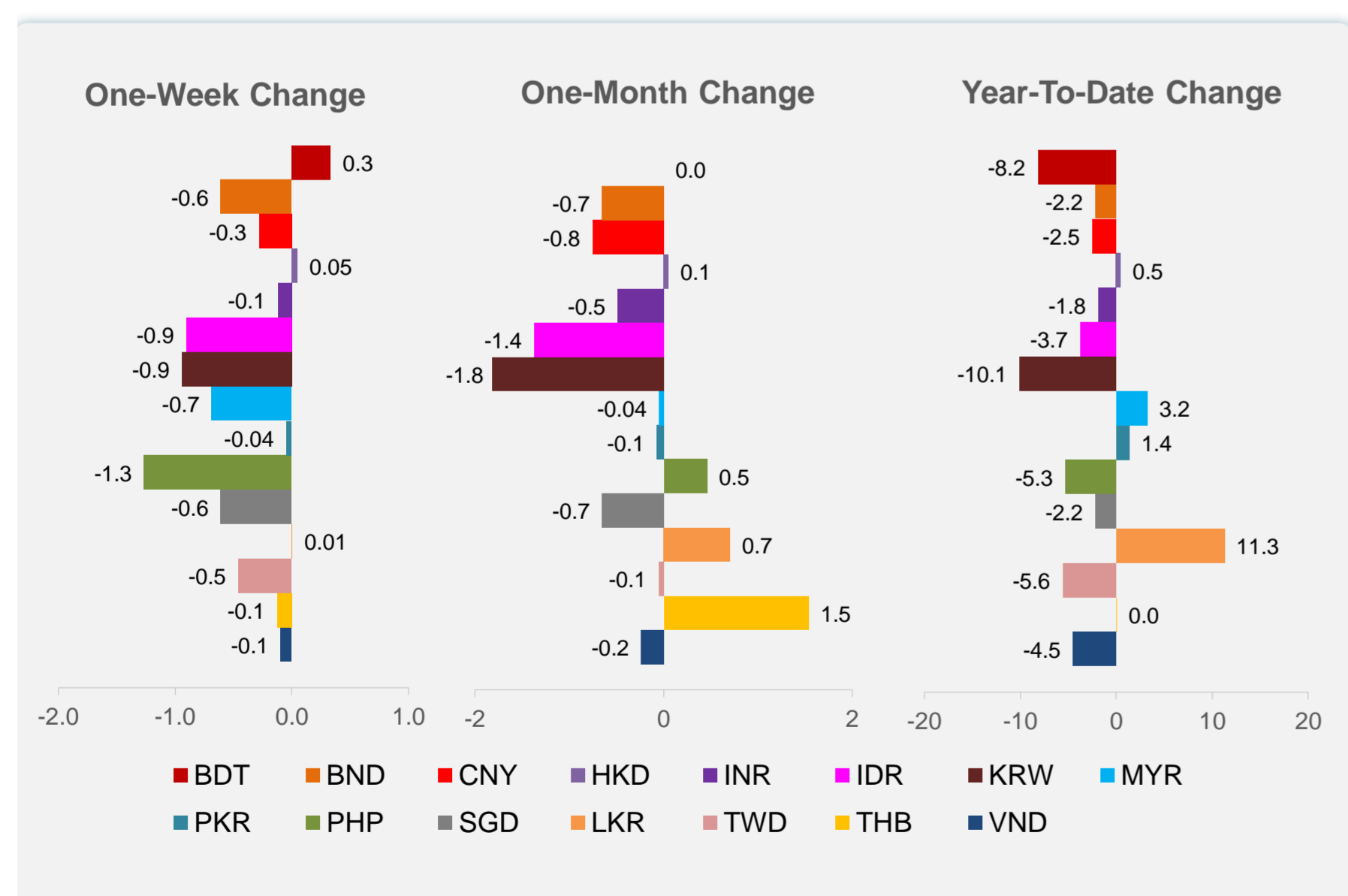
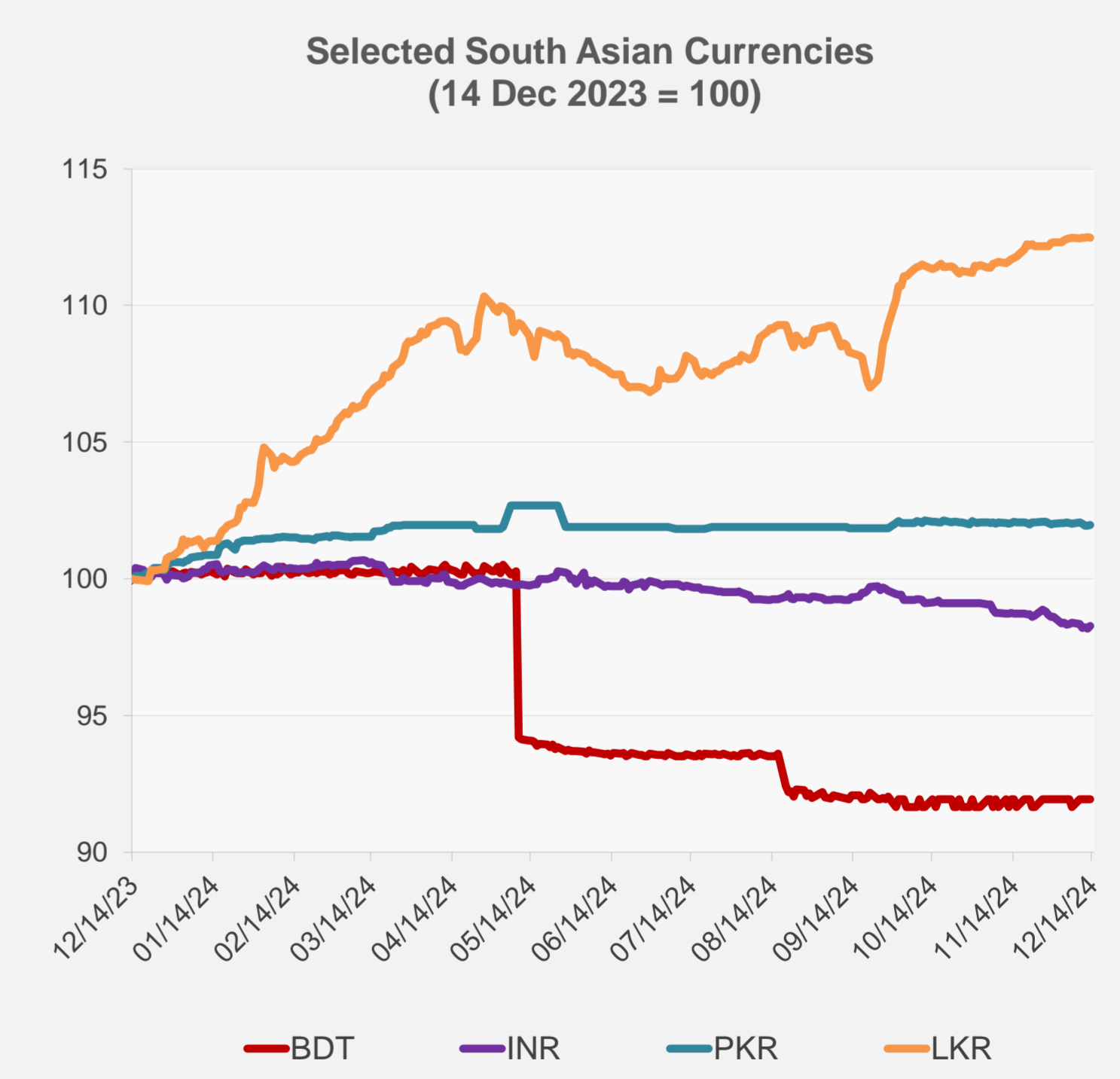
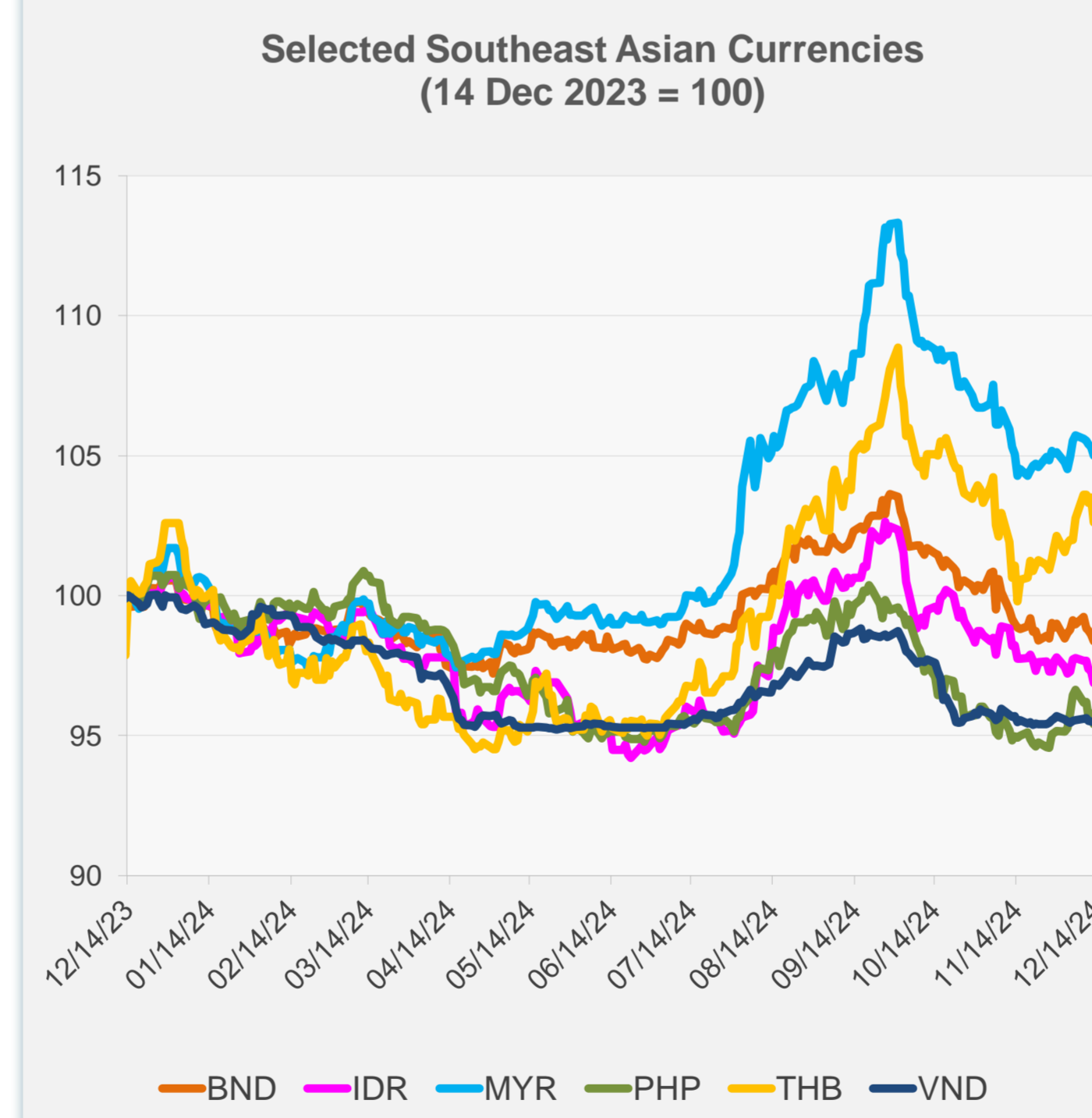


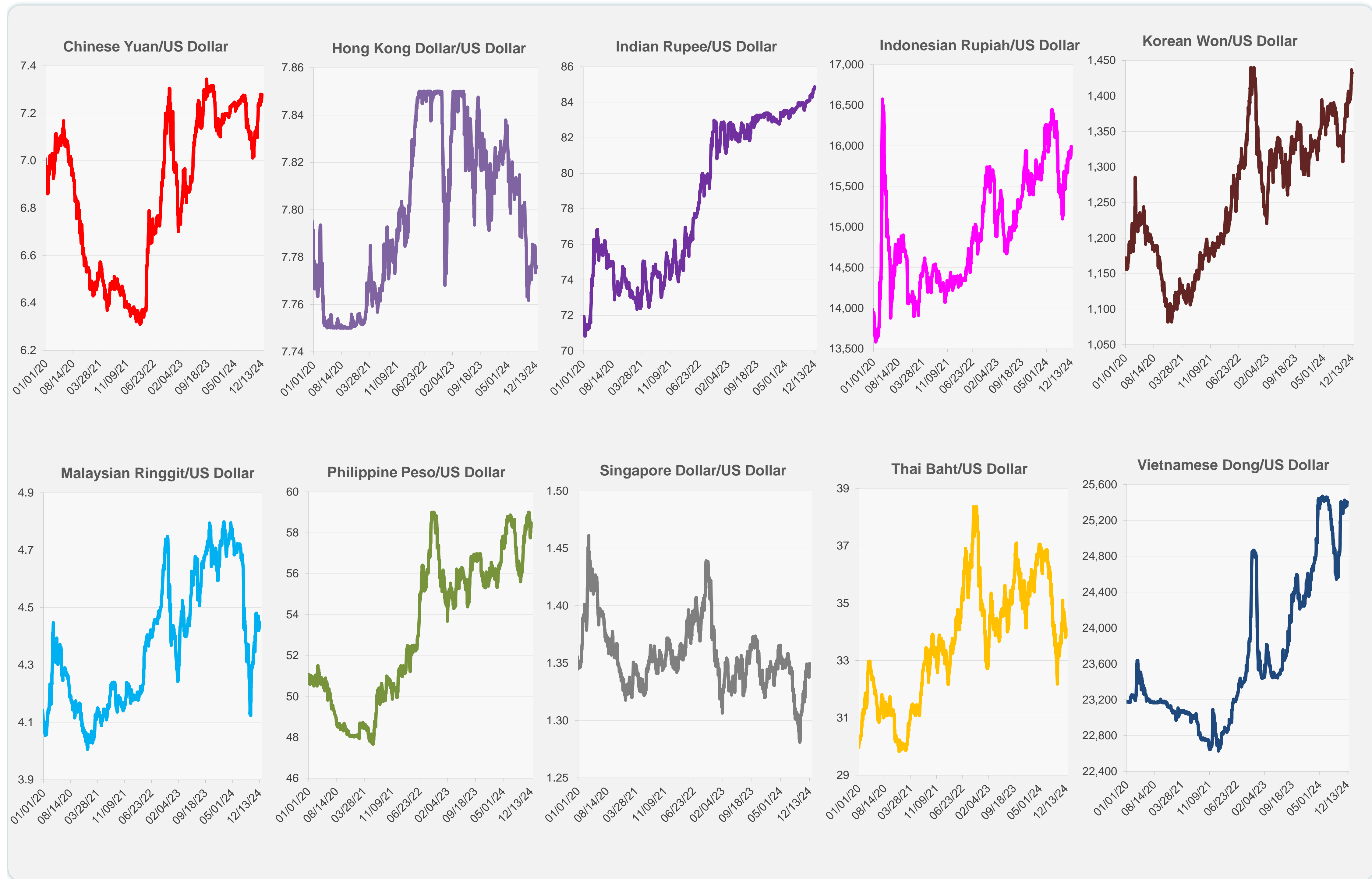
	Latest Closing	% change from Previous Day	% change from 01-Jan-24
Euro	0.95	0.15	-5.04
Japanese yen (JPY)	153.69	-0.89	-8.33
Bangladeshi taka (BDT)	119.50	0.00	-8.16
Brunei dollar (BND)	1.35	-0.25	-2.16
Chinese yuan (CNY)	7.28	-0.22	-2.46
Hong Kong dollar (HKD)	7.78	-0.02	0.45
Indian rupee (INR)	84.80	0.08	-1.84
Indonesian rupiah (IDR)	15,994.50	-0.43	-3.74
Korean won (KRW)	1,432.70	-0.08	-10.09
Malaysian ringgit (MYR)	4.45	-0.29	3.24
Pakistan rupee (PKR)	278.05	0.03	1.36
Philippine peso (PHP)	58.48	-0.40	-5.29
Singapore dollar (SGD)	1.35	-0.25	-2.16
Sri Lanka rupee (LKR)	290.20	-0.01	11.29
Taipei,China NT dollar (TWD)	32.52	-0.02	-5.58
Thai baht (THB)	34.13	-0.86	0.03
Vietnamese dong (VND)	25,405.00	-0.04	-4.48



NIE = Newly Industrialized Economies

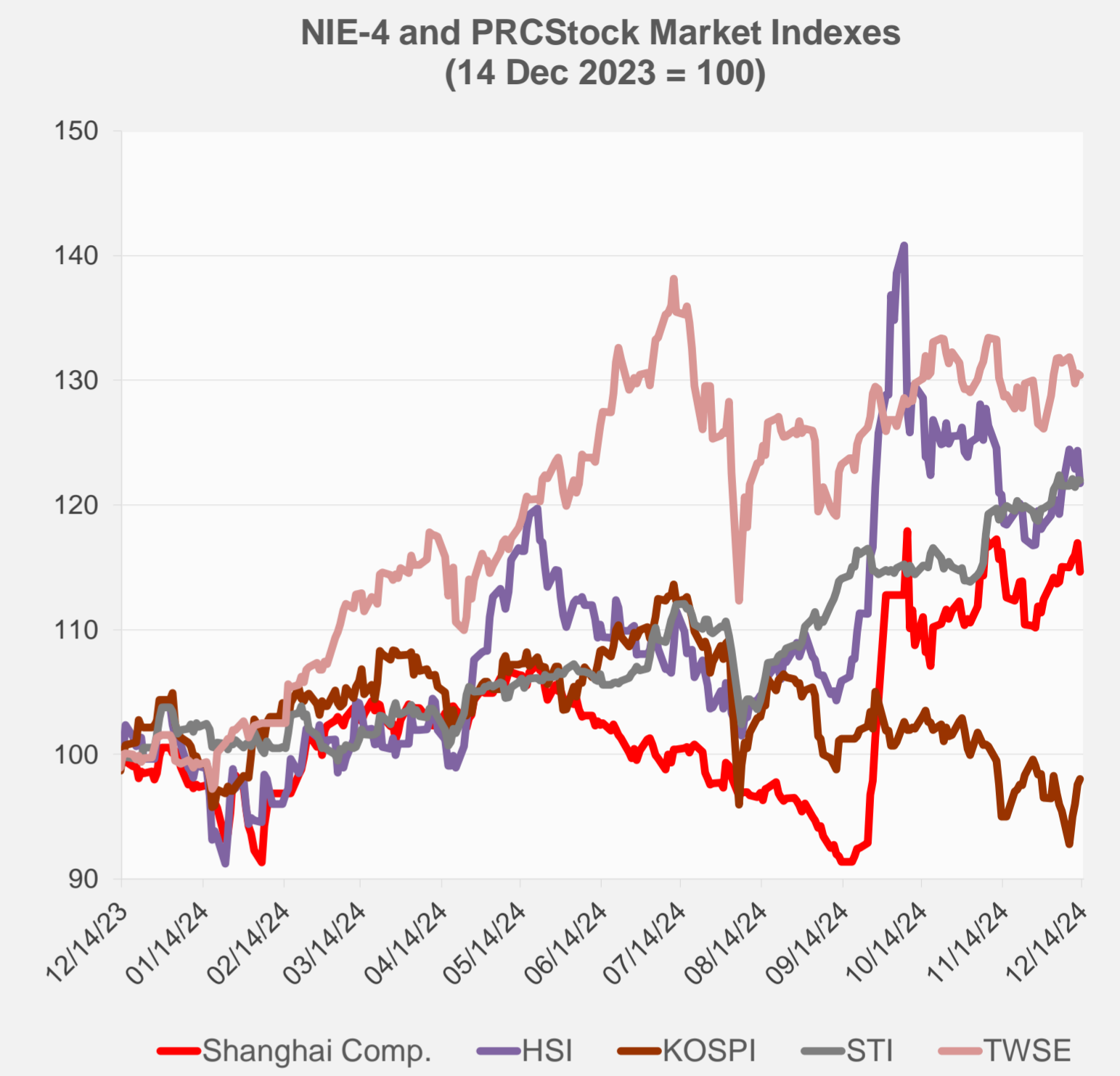
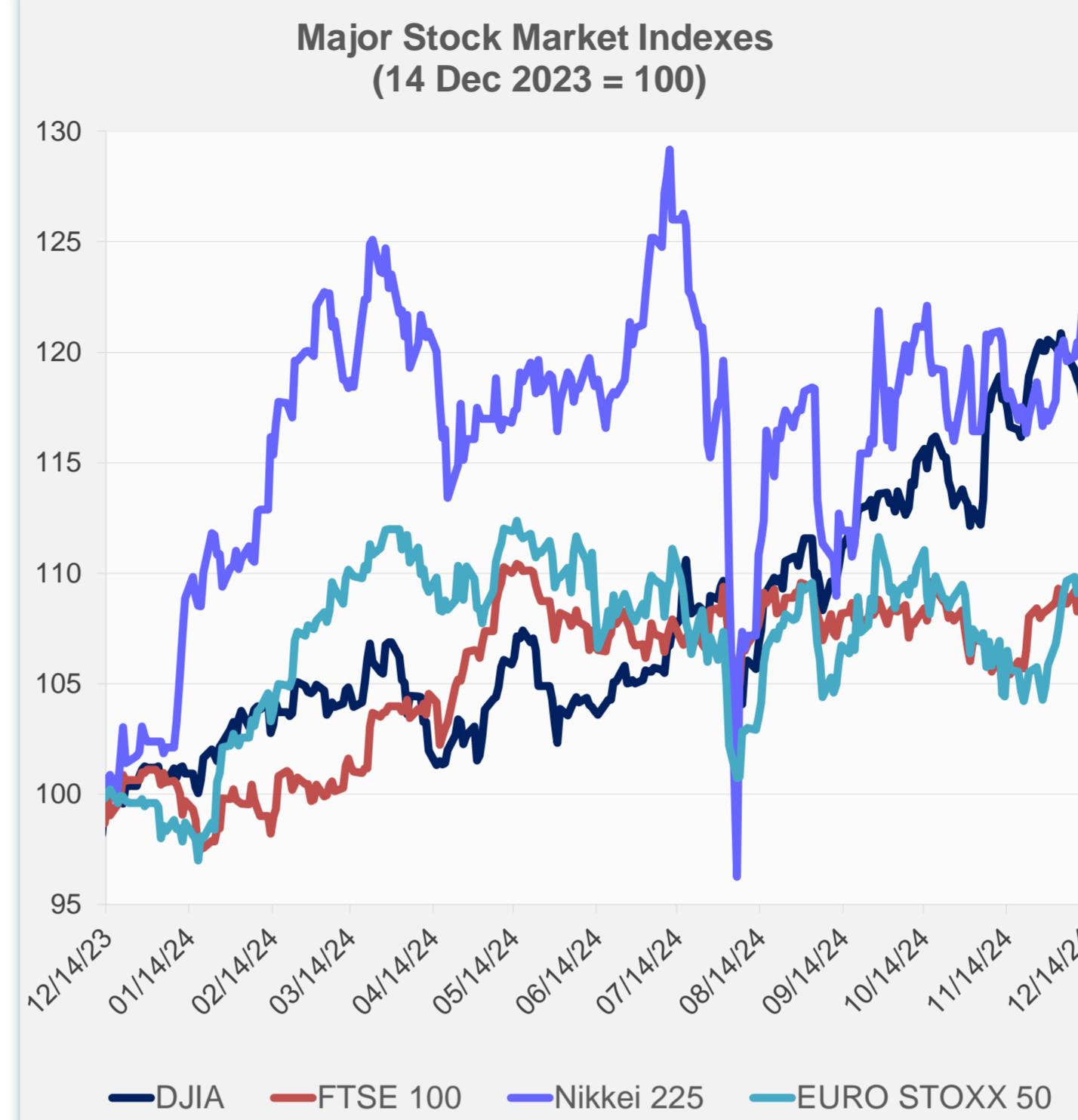


Note: Negative/Decreasing values indicate depreciation of local currency, and positive/increasing values indicate appreciation.  
Source: ADB calculations using data from Haver Analytics.

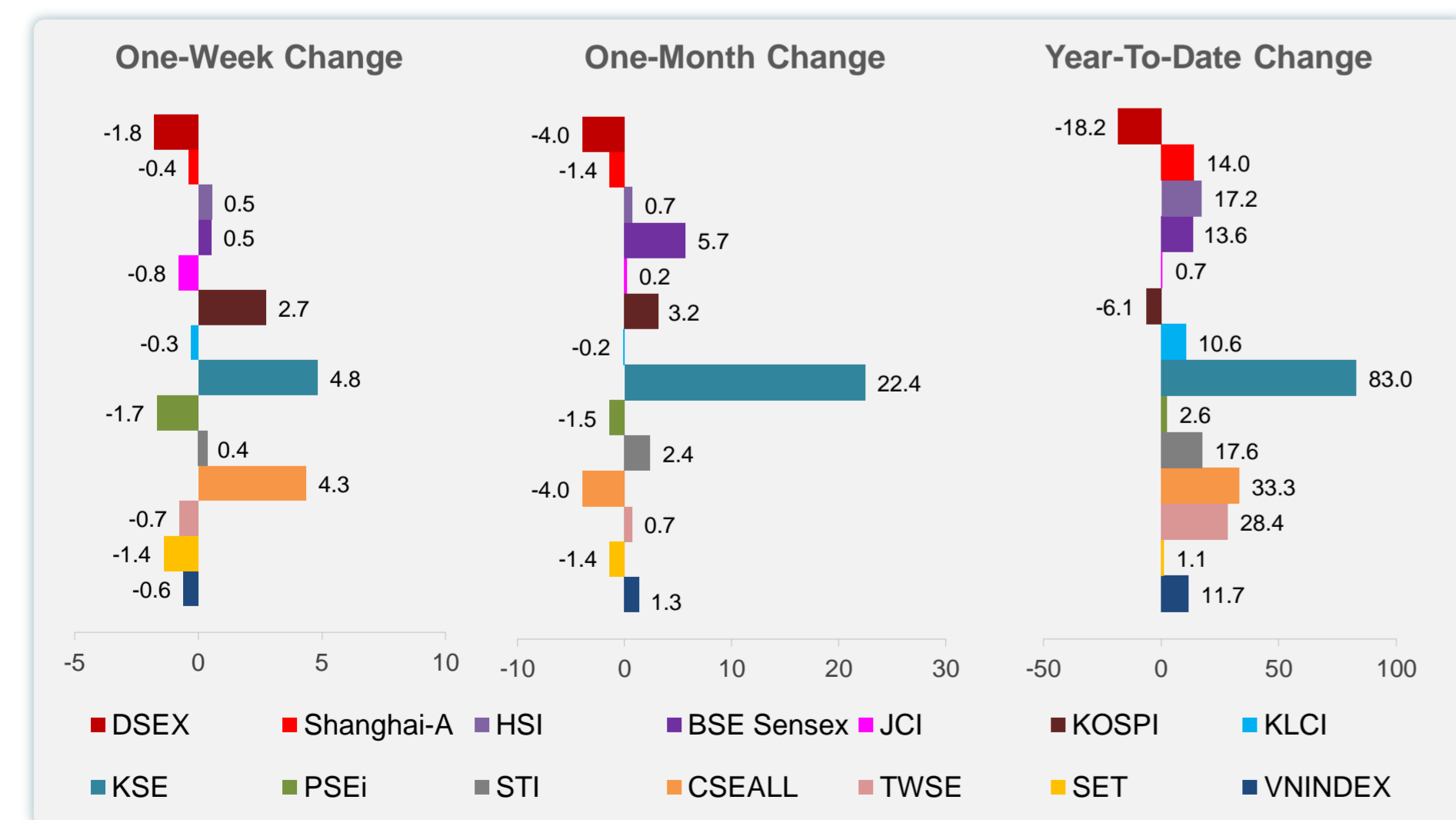
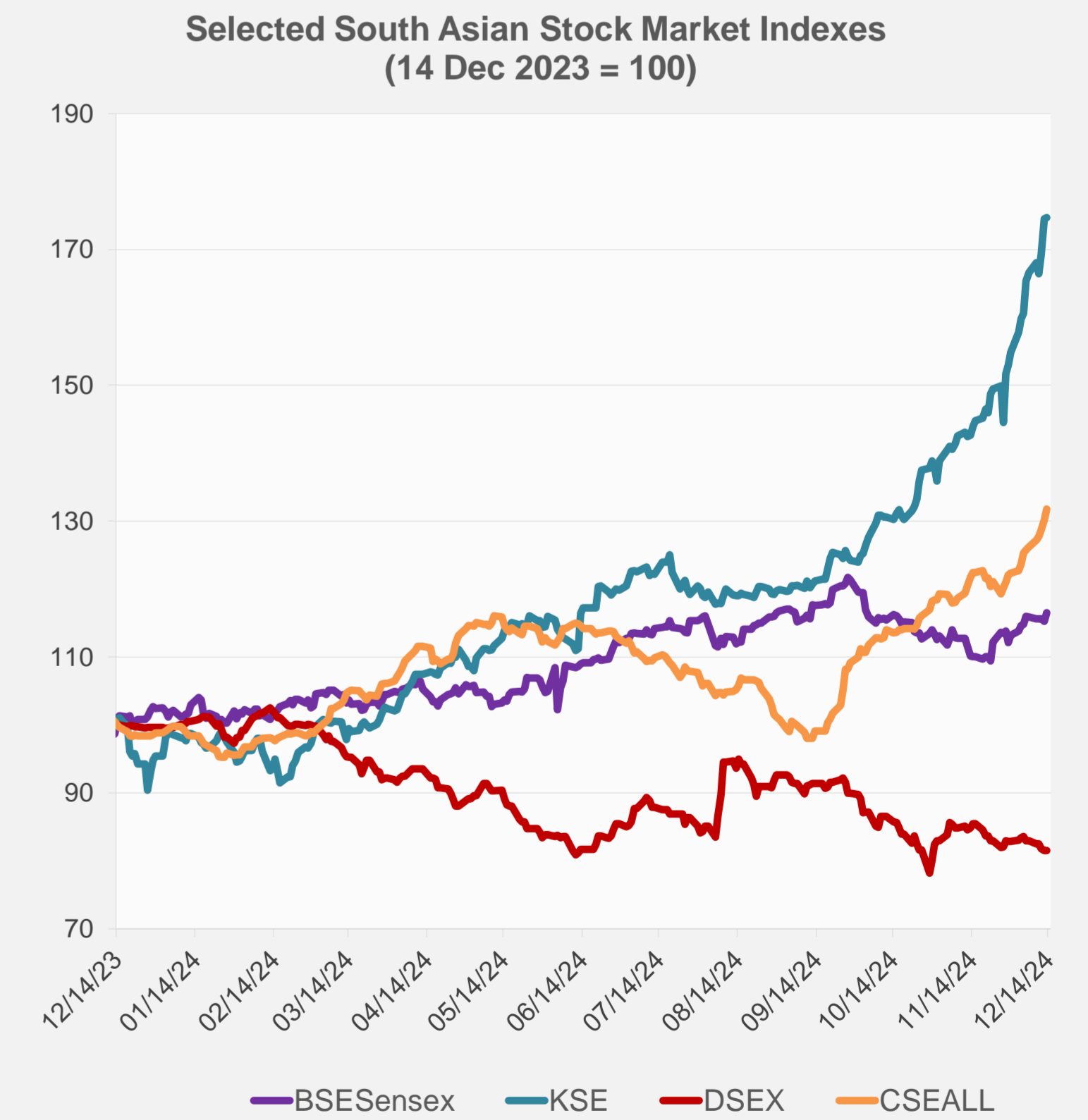
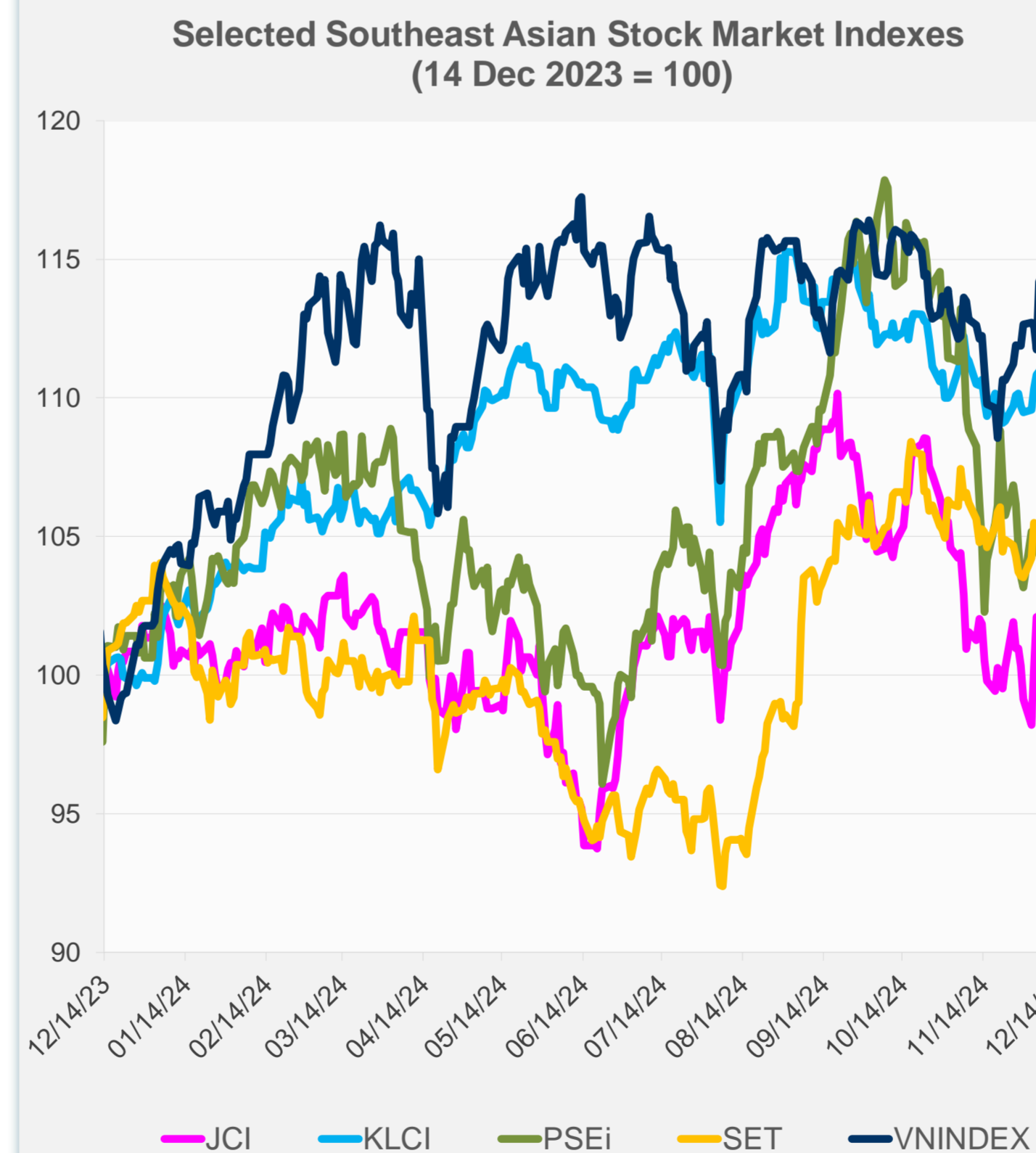


Source: Haver Analytics.

	Latest Closing	% change from Previous Day	% change from 01-Jan-24
US Dow Jones Ind Avg	43,828.06	-0.20	16.29
US NASDAQ	19,926.73	0.12	32.74
US S&P 500	6,051.09	0.00	26.86
UK FTSE 100	8,300.33	-0.14	7.33
EURO STOXX 50	4,967.95	0.05	9.88
Japan NIKKEI 225	39,470.44	-0.95	17.95
Bangladesh DSEX	5,105.43	0.00	-18.22
PRC Shanghai Comp.	3,391.88	-2.01	14.02
Hong Kong, China HSI	19,971.24	-2.09	17.15
India BSE Sensex	82,133.12	1.04	13.64
Indonesia JCI	7,324.79	-0.94	0.71
Korea, Rep. of KOSPI	2,494.46	0.50	-6.06
Malaysia KLCI	1,608.75	0.42	10.59
Pakistan KSE 100	114,301.80	0.11	83.03
Philippines PSEi	6,616.51	-0.37	2.58
Singapore STI	3,810.35	0.03	17.59
Sri Lanka CSEALL	14,205.34	1.21	33.33
Taipei, China TWSE	23,020.48	-0.11	28.39
Thailand SET	1,431.67	-0.57	1.12
Viet Nam VNINDEX	1,262.57	-0.38	11.74



NIE = Newly Industrialized Economies



Sources: ADB calculations using data from CEIC Data Company and Haver Analytics.



Sources: CEIC Data Company and Haver Analytics.

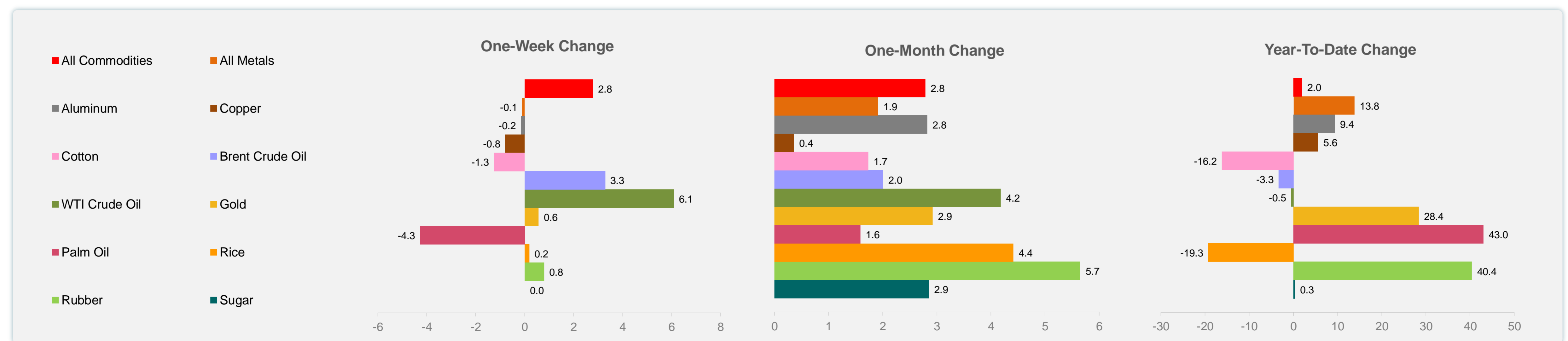
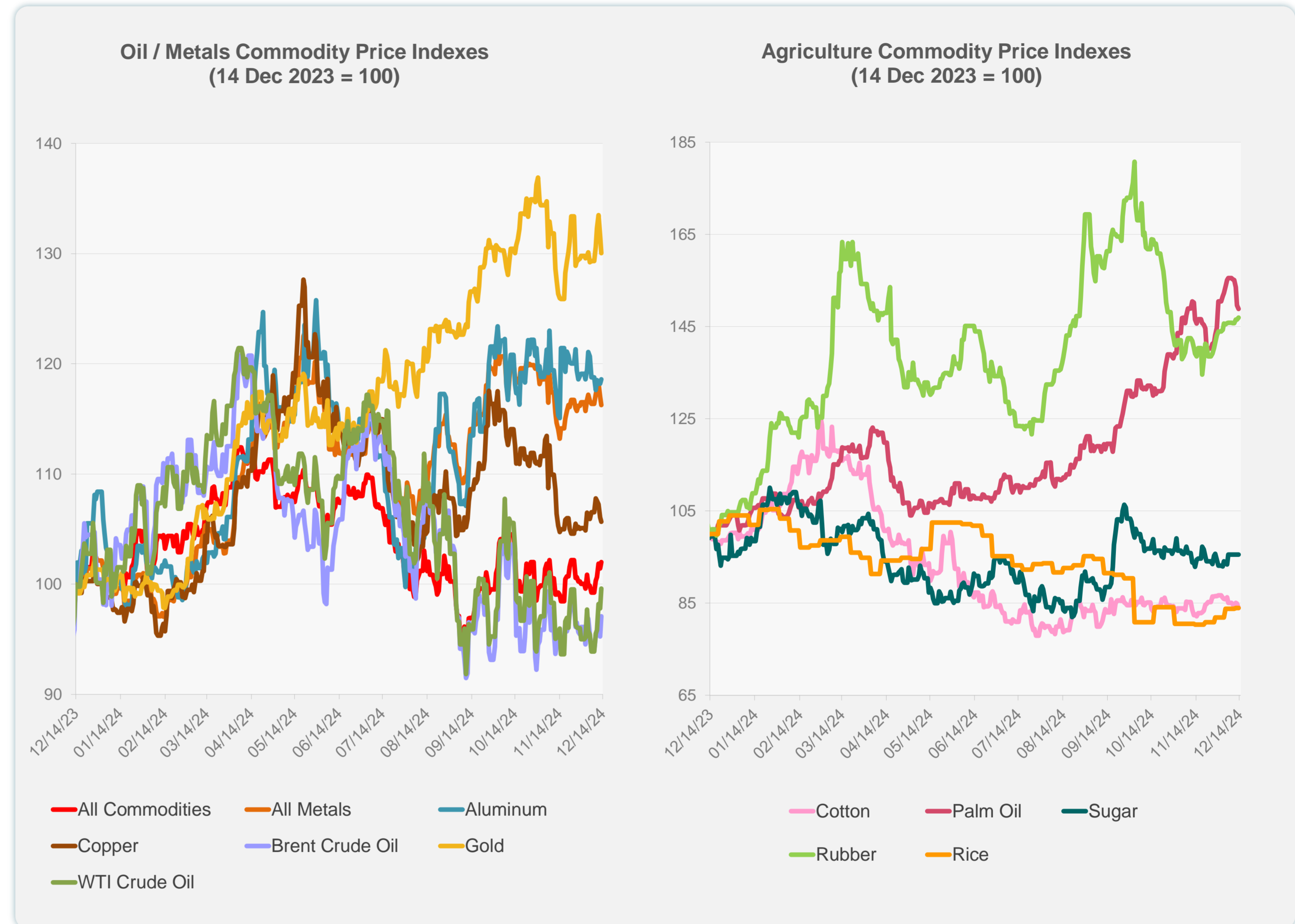
Daily Market Watch  
**COMMODITY PRICES**

16 December 2024, 9:00 AM Manila

	Unit	Latest Closing	% change from Previous Day	% change from 01-Jan-24
S&P All Commodities	US\$	546.30	0.58	1.99
S&P All Metals	US\$	315.77	-0.63	13.82
Aluminum	US\$/metric ton	2,565.78	0.33	9.39
Copper	US\$/metric ton	8,940.53	-0.36	5.63
Cotton	US cents/lb	65.77	-1.10	-16.22
Brent Crude Oil	US\$/barrel	75.01	1.92	-3.34
WTI Crude Oil	US\$/barrel	71.29	1.81	-0.50
Gold	US\$/troy oz	2,648.23	-1.21	28.37
Palm Oil	US\$/metric tonne	1,156.76	-0.47	42.99
Rice <sup>1</sup>	US\$/metric ton	544.00	0.00	-19.29
Rubber <sup>2</sup>	US\$/kg	243.00	0.29	40.38
Sugar	US cents/lb	20.54	0.00	0.34

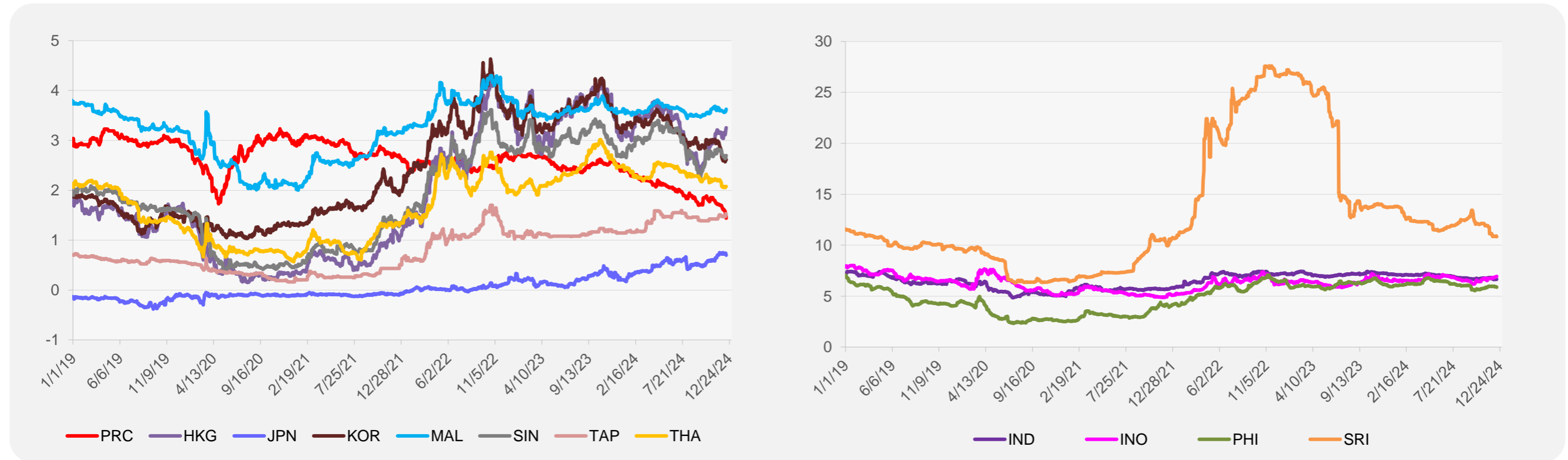
<sup>1</sup> Latest closing price from 12 December 2024.

<sup>2</sup> Singapore Exchange, Ribbed Smoked Sheet Rubber.

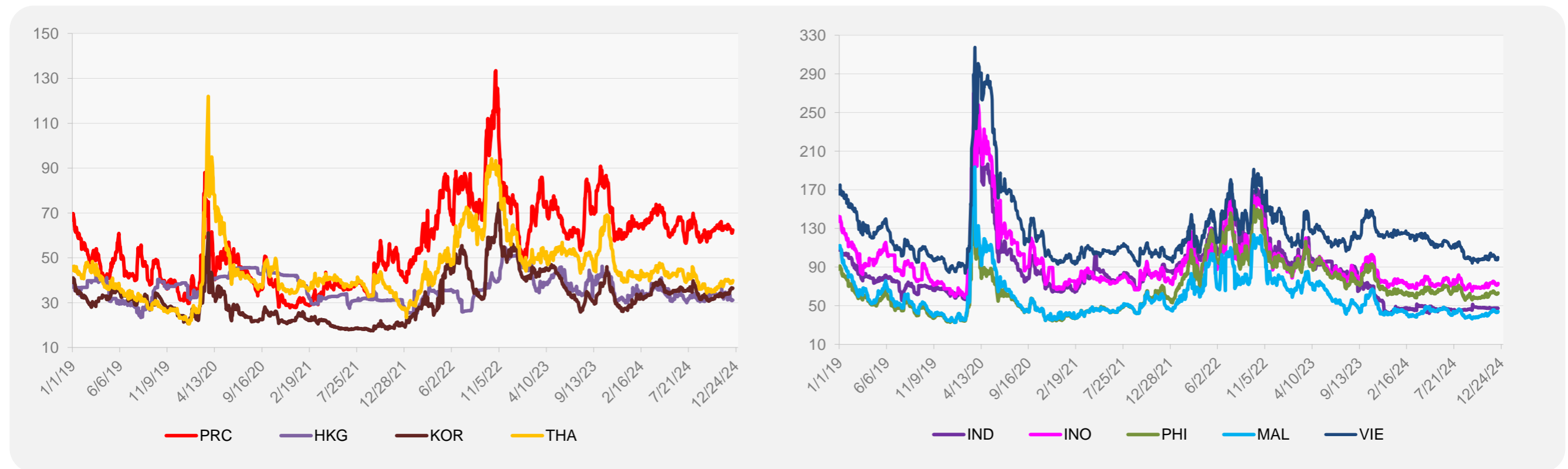


Source: ADB calculations using data from Bloomberg.

### 5-YEAR LOCAL CURRENCY GOVERNMENT BOND YIELDS (%)



### 5-YEAR CREDIT DEFAULT SWAP<sup>1</sup>



<sup>1</sup> In USD and based on sovereign bonds.  
Source: ADB calculations using data from Bloomberg.